

CCARES Winlink Express 2 Meter Soundmodem Configuration



Published November 2016

Written by Tim Gore, KE6QBV

Training, Communications & Operations Officer, CCARES

Getting Started

The latest release of Winlink Express (formerly RMS Express) has greatly improved the ease of configuring 2 meter packet based Winlink access. There is no longer the need to configure a virtual COM port to access a software TNC.

This document will take you through the setup process. The following software will be used:

- Winlink Express (<https://www.winlink.org/WinlinkExpress>)
- UZ7HO (<http://uz7.ho.ua/packetradio.htm>)

This software will be the same software that is now used in the CCARES radio room. This configuration example is for those with Signalink USB devices, which are used throughout the CCARES radio room. It will assume that your Signalink USB has been properly installed and configured. For more information on this device, please see the manufactures website (<http://www.tigertronics.com/>).

Installation & Configuration - UZ7HO Soundmodem

- 1) Go to the UZ7HO soundmodem website (see above) and download the soundmodem94.zip file. The number 94 in the filename refers to the version number, which may be higher in the future.
- 2) Unzip the file and copy the soundmodem.exe to a convenient folder of your choice.
- 3) Run the exe file. Your computer may display a dialog box asking if you wish to make a Windows firewall exception. Make sure to allow this by checking both public and private network access.
- 4) On the soundmodem screen, click on the Settings menu and select Devices
- 5) Select USB Audio CODEC for both Output and Input devices.
- 6) Make sure the following items are checked: TX rotation, single channel output, color waterfall, stop waterfall on minimize and Enabled for KISS Server Port (make sure AGWPE Server Port is unchecked).
- 7) PTT Port should be NONE. Make sure the Dual PTT box is checked.

8) Once done, your settings should exactly those in Figure A.

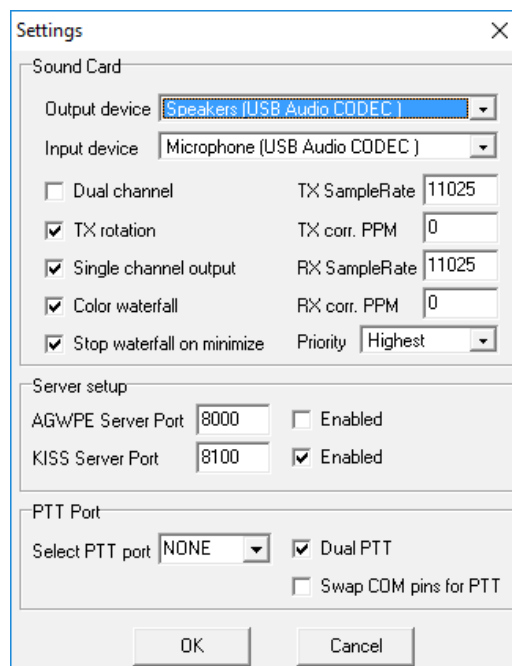


Figure A

9) Click OK to save these settings.

10) Once again click the settings menu in the soundmodem screen. This time select Modems.

11) Make sure default settings, KISS optimization and non-AX.25 filter are all checked.

12) Under modem type ch: A set mode to VHF AX25 1200 bd.

13) Once done, your settings should exactly match those in Figure B.

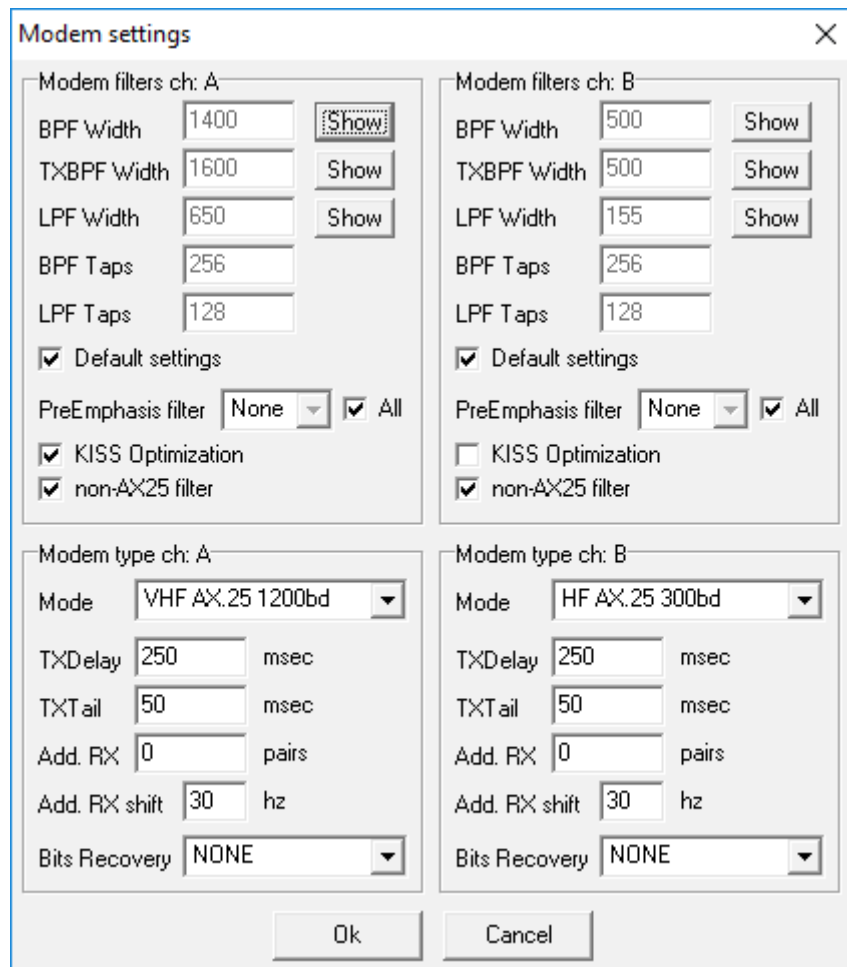


Figure B

14) Click OK to save these settings. Leave the soundmodem running and move onto the next steps.

Installation & Configuration – Winlink Express

1) Start Winlink Express. Click on the drop-down menu next to Open Session and select Packet Winlink (see Figure C).

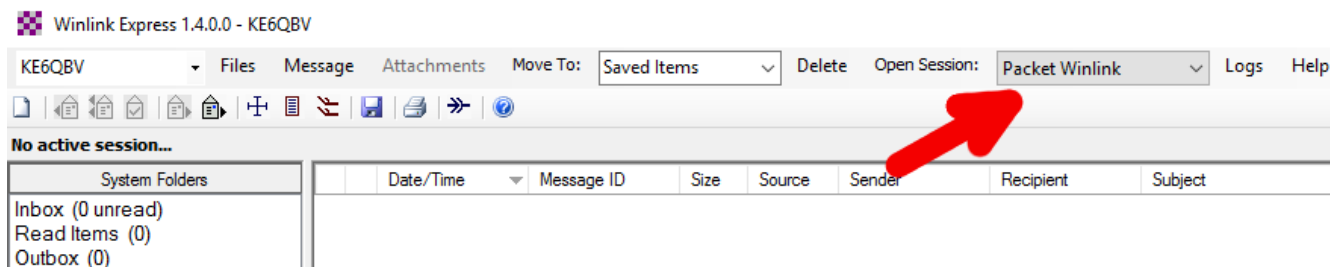


Figure C

2) Click on the words Open Session (see Figure D).

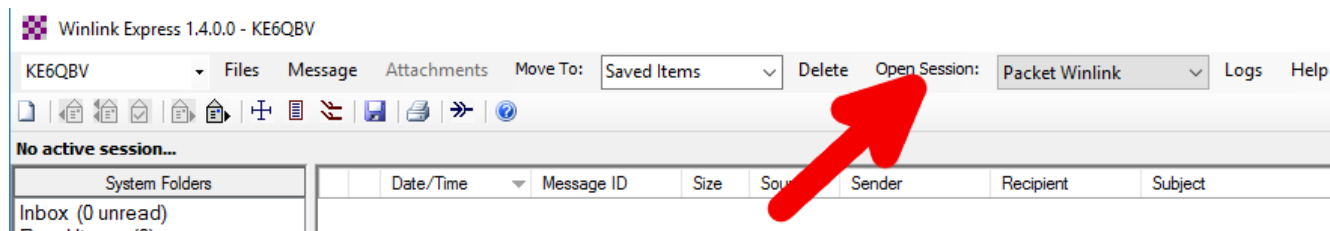


Figure D

3) Click Setup

4) Set the following parameters:

- Packet TNC Type to KISS
- Packet TNC Model to ACKMODE
- Serial Port to TCP
- Under TNC parameters, select 1200 baud.
- Check Enable IPoll

5) Verify that your screen exactly matches Figure E.

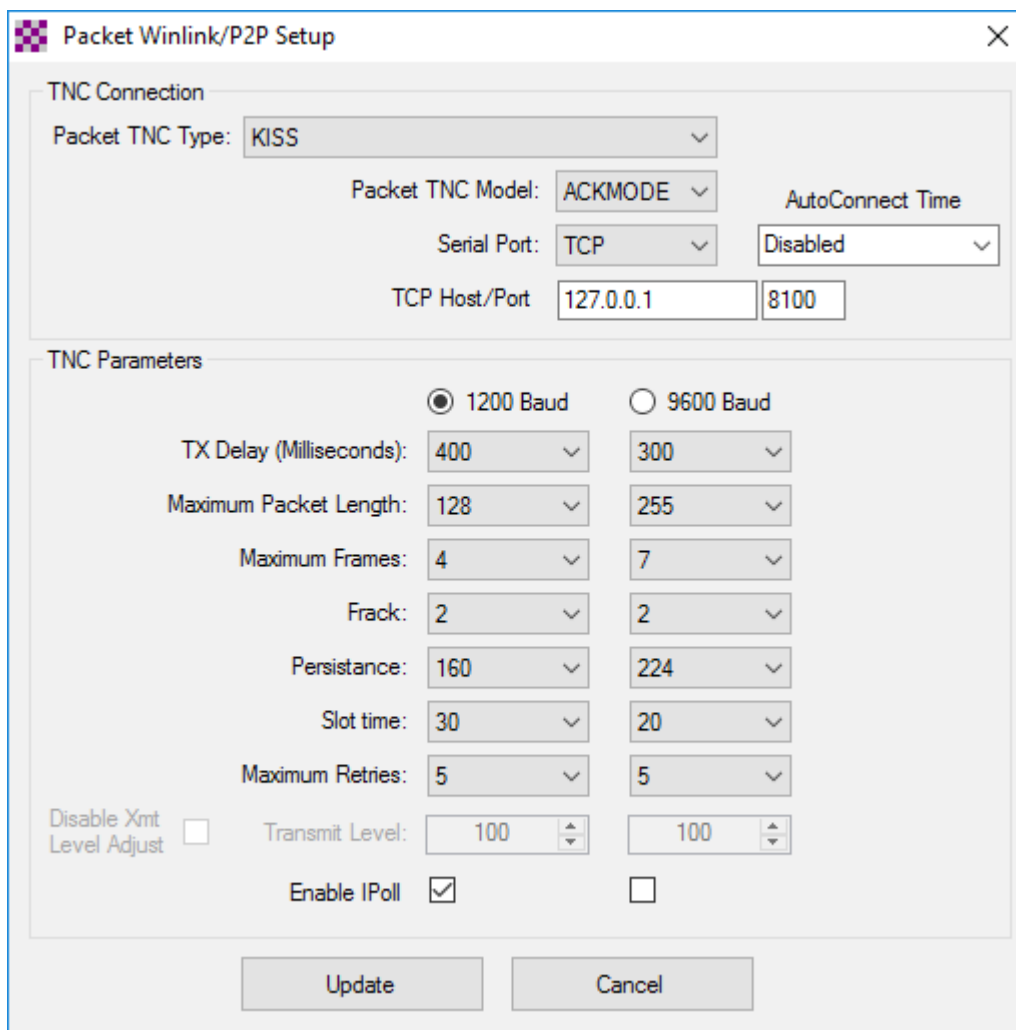


Figure E

6) Click Update.

You should now be able to click Start which will begin the process of connecting to a gateway. The operation of Winlink Express will function in a very similar manner as when connecting over HF frequencies. Be aware that in the future you will need to start the soundmodem before using Winlink Express.

You can use the Channel Selection to select a station near you. I suggest you use either K6CCR-10 or KF7EE-10 (see Figure F).

Stations found within 160 kilometers of your grid square.						
Callsign	Frequency (MHz)	Baud	Grid Square	Group	Distance (km)	Bearing (Degrees)
KF7EE-10	431.125	9600	DM04TA	PUBLIC	000	000
KF7EE-10	145.050	1200	DM04TA	PUBLIC	000	000
K6CCR-10	145.050	1200	DM04TA	PUBLIC	000	000
K6FRG-10	145.050	1200	DM04VC	PUBLIC	018	060
K6JGL-10	145.050	1200	DM03TU	PUBLIC	019	180
W6GSW-10	431.125	9600	DM04WB	PUBLIC	023	079
W6GSW-10	145.050	1200	DM04WB	PUBLIC	023	079
KE6WEZ-10	145.050	1200	DM04PG	PUBLIC	041	313
KE6VZZ-10	144.970	1200	DM13AR	PUBLIC	050	130
W6ACS-11	431.125	9600	DM13CW	PUBLIC	055	099
KE6RHV-10	145.630	1200	DM04XN	PUBLIC	068	027
W6ACS-10	431.475	9600	DM13DS	PUBLIC	068	114
AG6MO-10	145.090	1200	DM14EC	PUBLIC	070	082
K6BRK-10	144.970	1200	DM14ED	PUBLIC	070	078
W6CTR-10	144.970	1200	DM14FA	PUBLIC	077	090
KG6WXC-10	145.050	1200	DM04JE	PUBLIC	079	284
WB6TT-10	144.970	1200	DM13FU	PUBLIC	080	103
K6GPH-10	145.050	1200	DM13DN	PUBLIC	088	128

Figure F

Acknowledgements

The following sources were used to prepare this document:

- Dick Hughes, W6CCD, w6ccd@arrl.net
- W2YG Software, <http://www.w2ygsoftware.com/Home/WinlinkExpress>
- Winlink Global Radio E-mail, <http://winlink.org/>